

K485 >



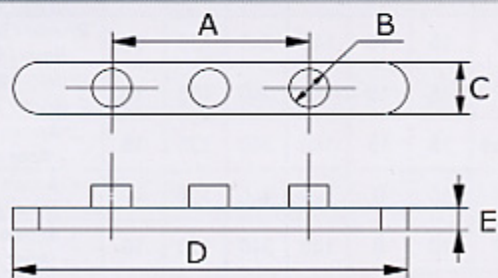
< K959



> K509



< K509B

Codice
Code
Code

A

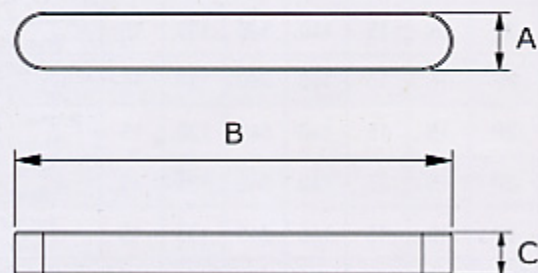
B

C

D

E

K485	30	2x6mm	8	60	4
K485B	30	2x6mm	8	60	3,5
K510	34	2x6mm	8	60	3,5
KCR01	34	2x7,4mm	8	60	3,2
K959	15+15	3x7,5mm	8	60	4
K959B	15+15	3x7,5mm	8	60	3,5
KCR02	17+17	3x7,4mm	8	60	3,2
K959C	17+17	3x7,5mm	8	60	3,5

Codice
Code
Code

A

B

C

K479	6	40	6
K480	6	60	6
K481	6	100	6
K482	8	40	7
K509C	8	60	5
K509D	8	60	5,5
K509	8	60	6
K483	8	60	7
K509B	8	100	6
K484	8	100	7